



Flat 1, 69 Mortlake Road, Richmond
Richmond



£6,750 pcm



Flat 1

69 Mortlake Road, Richmond

This impressive semi-detached house offers 6 spacious bedrooms with large windows and modern bathrooms. Open plan living, integrated kitchen, and mature garden. Classic character meets contemporary finishes. Council Tax band: G

Tenure: Freehold

- Spacious six-bedroom layout
- Four modern bathrooms
- Open plan living and dining area
- Contemporary kitchen with integrated appliances
- Direct garden access from kitchen and living areas
- Large, mature private garden
- Off-road parking with paved driveway
- Elegant period features and bay windows
- Modern walk-in showers and stylish vanities
- Abundant natural light throughout

Bedroom 1

10' 0" x 12' 6" (3.05m x 3.81m)

Bedroom 2

13' 6" x 17' 0" (4.11m x 5.18m)

Bedroom 3

9' 6" x 12' 4" (2.90m x 3.76m)

Bedroom 4

10' 9" x 16' 0" (3.28m x 4.88m)

Bedroom 5

13' 5" x 17' 0" (4.09m x 5.18m)

Bedroom 6

11' 0" x 11' 11" (3.35m x 3.63m)

Bedroom 7

8' 10" x 12' 5" (2.69m x 3.78m)

Bathroom

Bathroom

Kitchen

8' 11" x 11' 4" (2.72m x 3.45m)

Kitchen

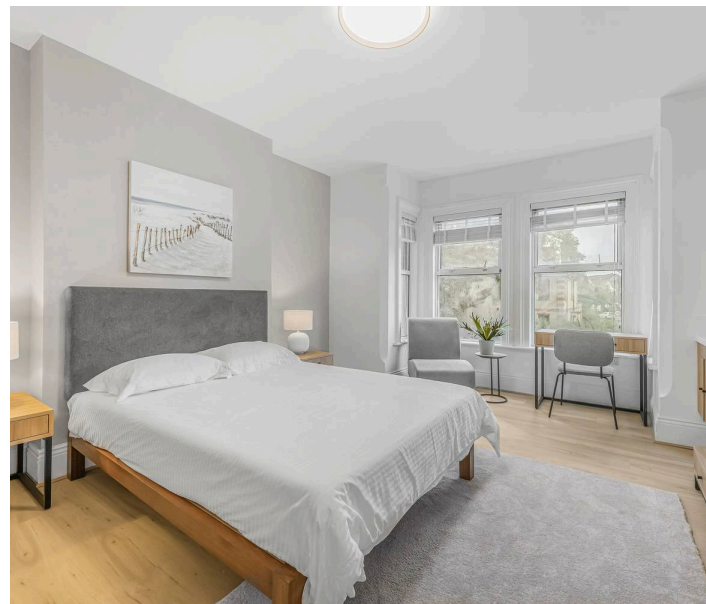
9' 7" x 12' 3" (2.92m x 3.73m)

Dining Room

10' 10" x 18' 2" (3.30m x 5.54m)

Cellar

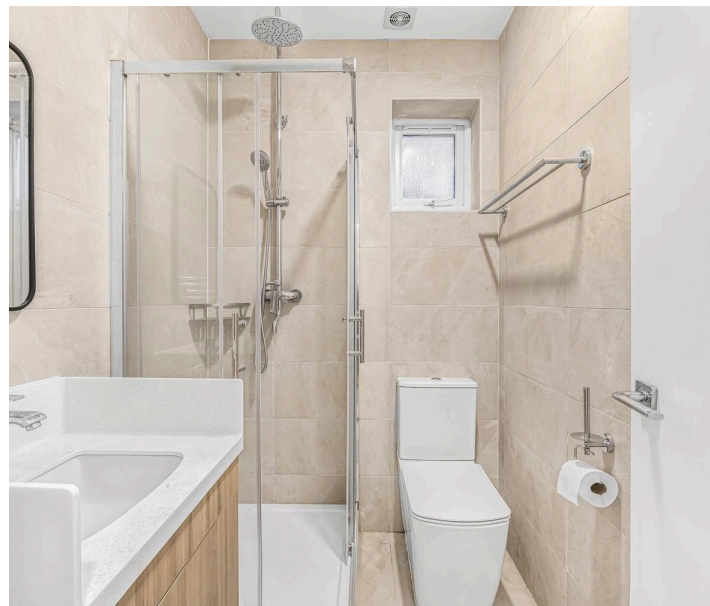
6' 2" x 16' 2" (1.88m x 4.93m)





GARDEN

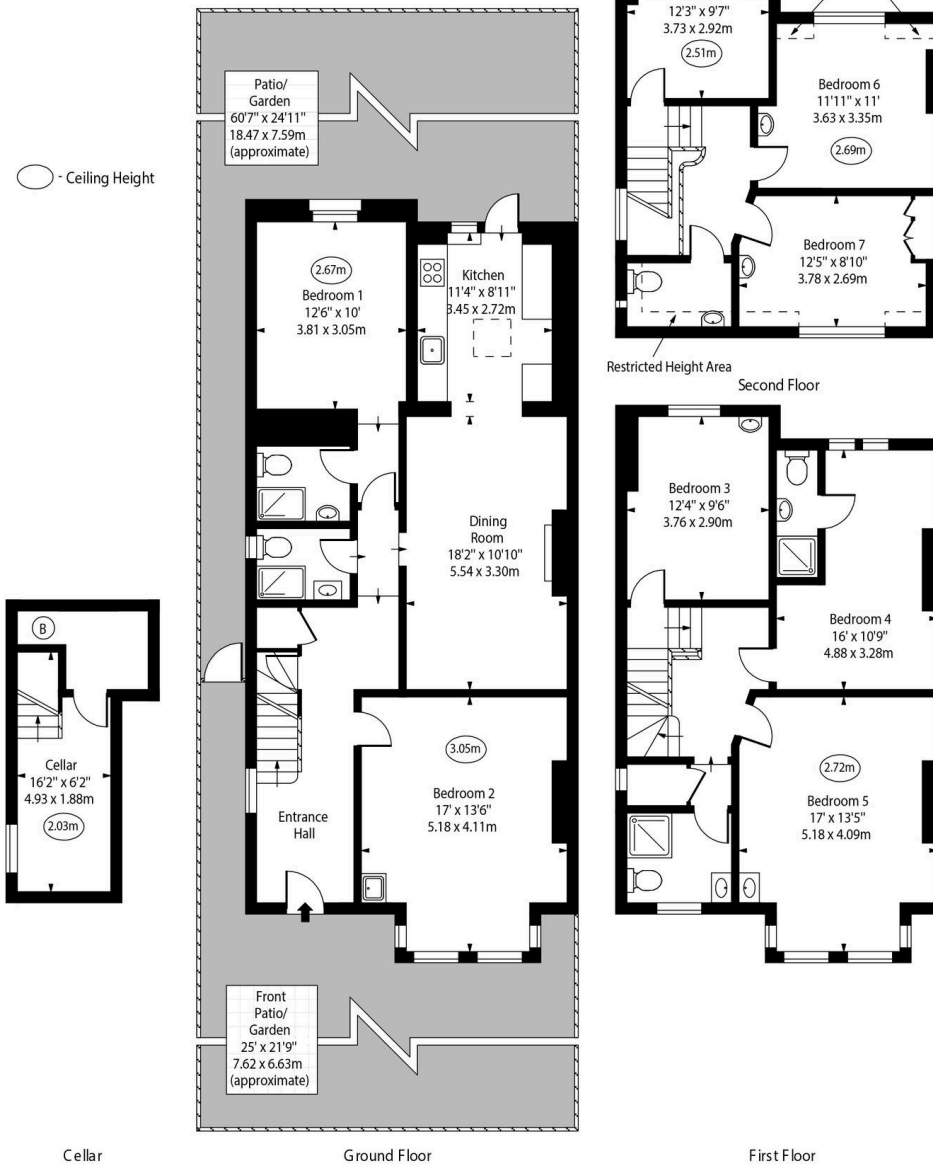
60' 7" x 24' 11" (18.47m x 7.59m)





Caspian Giles

Mortlake Road,
Richmond, TW9



Approx Gross Internal Area 2212 Sq Ft - 205.49 Sq M
 Approx. Floor Area Including Restricted Heights 2238 Sq Ft - 207.91 Sq M
 (Including Cellar)

Every attempt has been made to ensure the accuracy of the floor plan shown.
 However, all measurements, fixtures, fittings, and data shown are approximate interpretations and
 for illustrative purposes only. Measured according to the RICS. Not To Scale.
 www.goldlens.co.uk
 Ref. No. 029428E