



Imperial Square, London, SW6



Caspian Giles



Imperial Square, London, SW6

This beautifully presented two-bedroom Victorian terraced house seamlessly blends historical charm with contemporary comfort. The property welcomes you with a striking period facade, classic brick exterior, and a picturesque front garden enclosed by a white picket fence, offering significant kerb appeal. Inside, the spacious reception room is bathed in natural light from a large window, highlighting the plush seating area, modern decor, and a wall-mounted TV, perfect for both relaxing and entertaining. The two generously sized bedrooms benefit from large windows and an abundance of natural light. Both bedrooms are finished in neutral tones, creating a calming, versatile setting that easily accommodates personal style.

Key Features

- Charming period facade
- Picturesque front garden with white picket fence
- Modern kitchen with integrated appliances
- Direct garden access from kitchen
- Spacious living area with contemporary decor
- Large windows throughout
- Abundant natural light in all rooms
- Victorian terraced house with classic features

Council Tax band: E

Tenure: Freehold

EPC Energy Efficiency Rating: E

EPC Environmental Impact Rating: E

Kitchen

13' 3" x 9' 4" (4.04m x 2.84m)

Reception Room

14' 6" x 11' 2" (4.42m x 3.40m)

Bedroom

9' 5" x 8' 0" (2.87m x 2.44m)

Principal Bedroom

18' 2" x 11' 11" (5.54m x 3.63m)

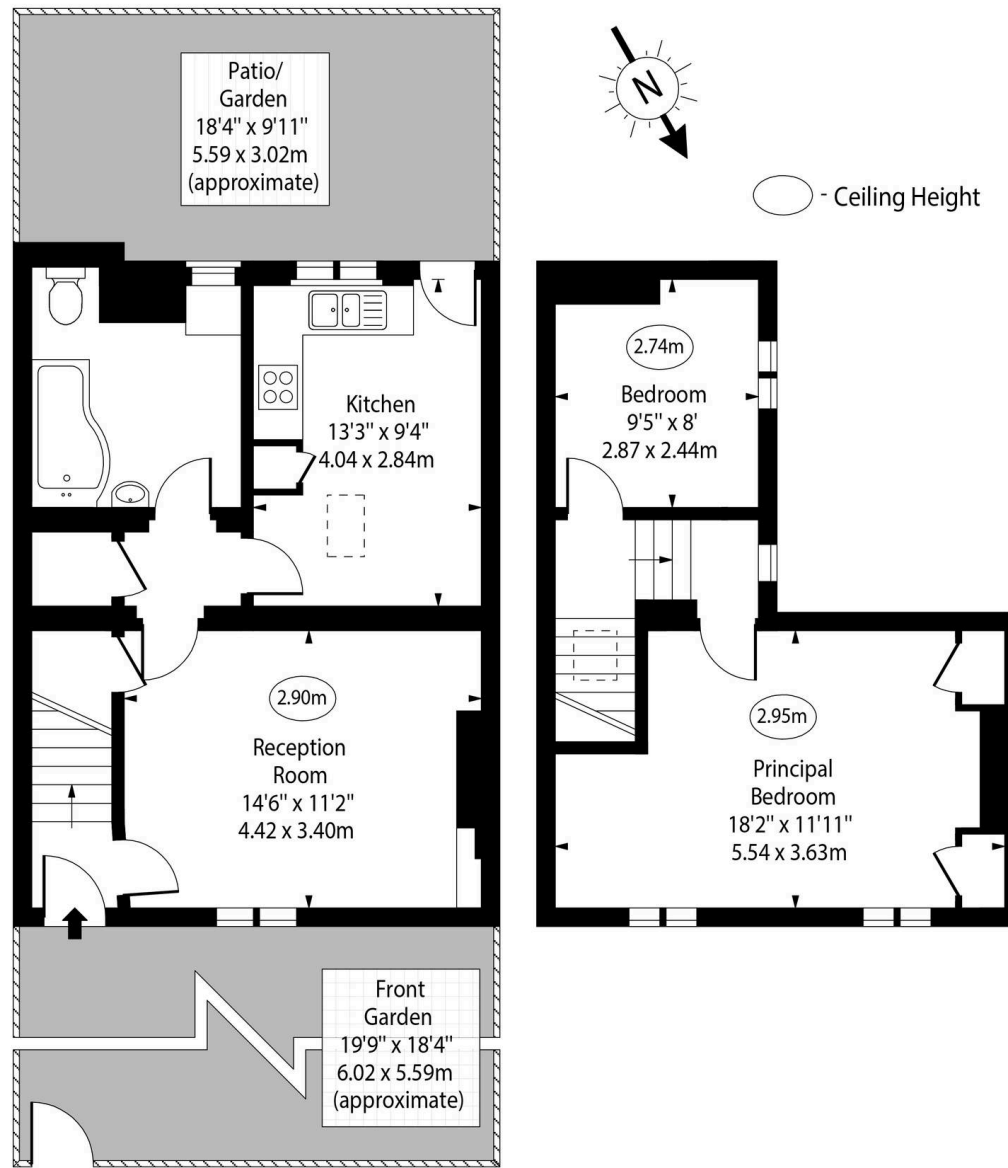








Imperial Square, SW6



Ground Floor

First Floor

Approx Gross Internal Area

786 Sq Ft - 73.02 Sq M

For Illustration Purposes Only - Not To Scale